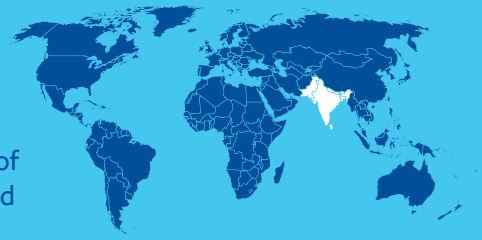
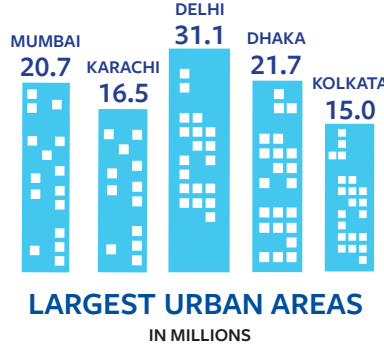


South Asian Peoples

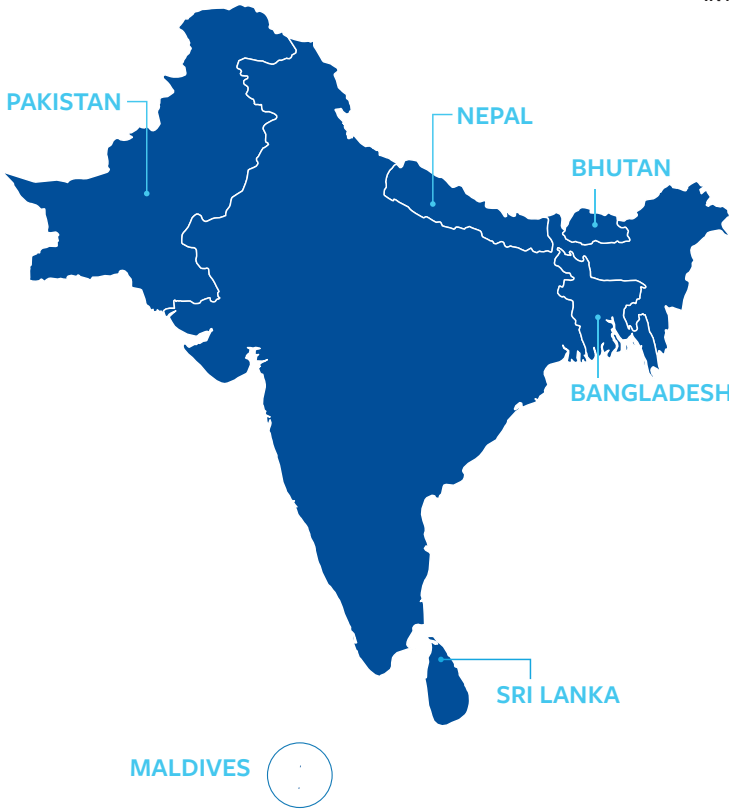
From the heights of the mighty Himalayas to the crystal-clear waters of the Maldives, South Asia is both awe-inspiring and heart-wrenching. It has the largest concentration of lostness on the planet. South Asia is the birthplace of Hinduism, Buddhism, Sikhism, and Jainism, and is home to nearly 1/3 of the world's Muslims.



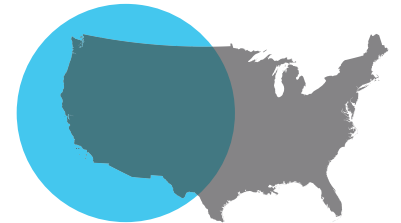
1.8 BILLION PEOPLE



TOP LANGUAGES

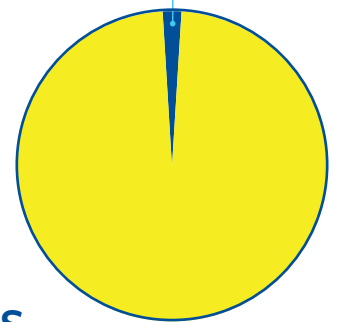


MAJOR RELIGIONS



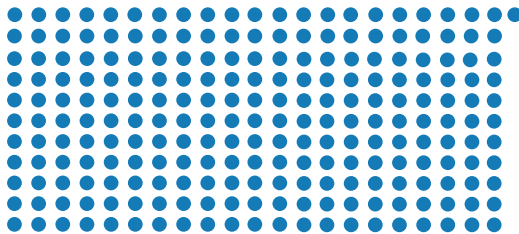
The **1.8 billion** people of South Asia are concentrated in an area **less than half** the size of the USA.

There are an estimated **34 million** evangelical Christians—**1.85%** of the population.



EVERY WEEK

232,000 people in South Asia die without Christ.



ONE DOT = 1,000 PEOPLE

2,354 UNREACHED PEOPLE GROUPS

(Included 1039 Unengaged Unreached people groups)

SOUTH ASIA has the largest unreached population in the world: **1.6 billion**

NO PLACE LEFT:
LOCAL OWNERSHIP OF THE CORE MISSIONARY TASK FOR EVERY PEOPLE AND PLACE.

imb
INTERNATIONAL MISSION BOARD

All Populations and PG Counts sourced from <https://www.peoplegroups.org/> (which is sourced from CPPI), % Evangelical from <https://operationworld.org/>, Birth Rates and Death Rates from <https://www.cia.gov/the-world-factbook/>
All data as of 5/15/2021